



RAPID DOOR
VertiGO Green

Rapid door for agricultural environments

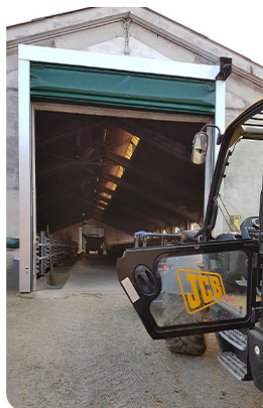


What is it?

A rapid door with a robust structure to control climate, dust and insects in agricultural environments. Ideal for all those companies that need to protect vehicles, animals and plants.

Fabric › Woven fabric in breathable PVC
Wind resistance › Class 2 / 3 / 4

Overview ↗



Main features

Impact resistant

The Green rapid fold-up doors feature increased horizontal steel bars that guarantee greater resistance to impact, caused by the passage of agricultural vehicles or the transit of animals inside stables and farms.

For your climate

This special version can be equipped with both breathable and translucent PVC covering. These two options can favor both natural ventilation to ventilate a spoiled air environment and enhance the luminance of the building.

Anti-insect

Vertigo Green's PVC anti-insect cover has been designed to effectively repel the entry of insects into farm buildings, where flies, mosquitoes and grasshoppers are harmful to the welfare of plants and animals, continuing to unquestionably allow the passage of air.

A fold-up door designed specifically for stables, greenhouses and crops.



Features

Shock-resistant
Climate-controlled
Air and light
Insect protection

Used mainly to

Stables
Greenhouses
Crops

Recommended
for

Composting
Chemistry ATEX

[Discover other fields ↗](#)



Safe passage

The Vertigo Green rapid door enable safe and controlled automation at all times, both for the passage of heavy vehicles and livestock and the same door*.

* the Green fold-up door has been developed in an oversized form compared to the Vertigo base range, to allow a higher resistance to impacts that may come from the transit of agricultural vehicles and animals.

Related to weather conditions

The rapid door can also be equipped with a climate control unit to regulate the movement of the mantle in the rooms where crop actions develop, such as: agricultural warehouses, nurseries and greenhouses.



A smart control unit

Depending on the weather conditions, the door can be opened automatically, always in relation to the signals coming from the external sensors installed.

These signals may, for example, be linked to weather stations or air quality sensors that can measure wind force and direction, external temperatures, precipitation, humidity and CO₂ values of indoor air.

This particular method of climate control by means of a control unit is optimal in greenhouse crops such as horticulture, floriculture, nursery and fruit growing.

In winter farmers often use the natural ventilation system, however in warmer periods this cooling method may not be sufficient to ensure the welfare of their animals.

In combination with the internal AHU, the breathable PVC coating of Vertigo Green promotes the development of an ideal microclimate for better stable management, especially in summer.



For the welfare of animals.

The fabric in breathable PVC protects the cattle from the cold winds of the North, gradually penetrating the sunlight coming from the East. The animals will thus be destined for a productive environment warm in winter and cool in summer.

In addition, the fabric in breathable PVC promotes excellent air recirculation, Key Element to maintain the high level of air quality breathed by the animal and, consequently, their productive performance.

Bugs? No thanks!

The special anti-insect fabric of Vertigo Green has repellent properties to protect greenhouses and crops from insects that can ruin the crop or undermine the health of the animal inside stables and farms.

* the Green version of the Vertigo fold-up doors ensures high levels of biosecurity in agricultural buildings while minimizing the risk of proliferation of animal diseases and pandemics of plant parasites.



What about plant health?

Protected crops can ensure climate control, cultivation in environments other than those of origin and even anticipate/delay production or produce out of season.

To ensure this, it is necessary to separate the rooms by means of special quick-winding sealing closures that, by means of special rows of portholes, in combination with artificial lights in the greenhouse, promote the correct passage of sunlight for a better development of the crop.

STRUCTURE

Beam and uprights	Self-supporting
Horizontal bars	Reinforced steel for increased impact resistance.
Motor cover	Standard Galvanized steel On request Powder coated steel, Stainless steel 441/304/316

COVERING

Double-sided PVC ripstop fabric	Standard Choice of colours weighing 950 gr/m ² On request Insulated 3 mm, Insulated 7 mm (3.3 W/m2 k), Translucent 35/40%, FDA white, Antistatic
Windowy	Porthole
Type of window	Transparent crystal
Window colour	Transparent

SPEED

Opening > up to 0,8 m/s	Closing > up to 0,5 m/s
-------------------------	-------------------------

MECHANICAL AND ELECTRONIC

Control panel	Standard IP54 painted steel frame (300 x 500 x 150 mm) On request Stainless steel, PVC frame (300 x 400 x 150mm)
Components and features	Motor and switchgear protection category IP54 Modular thermal protection Power transmitters Start/ Stop button Emergency stop button
Main supply	Standard Power supply 3 HP, three-phase 400V On request Power supply 3 HP, three-phase 230V

TEST

Normativa UNI EN 13241/CE

Watertight	Ref.s EN 12425, EN 12489	Class 1
Wind pressure	Ref.s EN 12424, EN 12444	Up to 35 m ² Class 2, plus design up to Class 4
Air permeability	Ref.s EN 12426, EN 12427	Class 0
Transmittance	Ref.s EN 12428, EN 12428	6,02 W/m ² K
Performance	Ref.s EN 12604, EN 12605	1.000.000 of cycles

Operating temperature > - 30 C°+ 70°C – Door not recommended where there are large temperature differences between the two environments.

[...] SAFETY

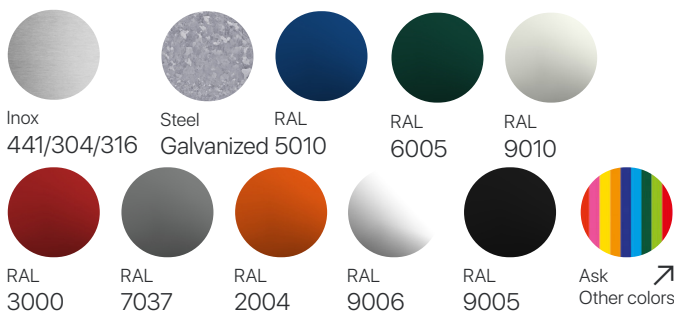
Components

Standard
Pair of Costa resistive safety sensors IP65
Su richiesta
Multi-beam barrier H 2500 IP67

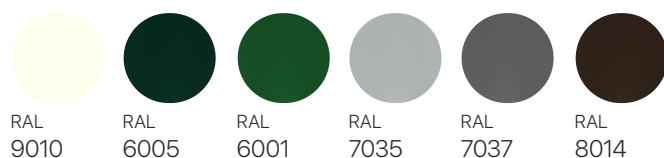
Emergency opening

Standard
Crank release
On request
Sistema di contrappeso, sblocco a catena

Types and colors structure (RAL)



Colors PVC fabric (RAL)



Account

Log in to your account
to download the .dwg

The background of the banner is a technical drawing of a safety barrier. It shows a side view of the barrier with dimensions: 'Clear opening' (1800mm), 'Height' (1800mm), 'Depth' (400mm), 'Total size' (2000mm), and 'Clear opening' (1800mm). A person is shown using a tool to work on the barrier. The drawing is labeled 'sensors' and 'Crank release'.



Be a part of us

Account

Remember that on our portal you can always take advantage of a number of useful features for your future logistics purchases.

www.glgdoors.com

